



**APC**

# Smart-UPS Lithium-ion

Lower operating costs. Perfect for distributed IT.

Life Is On

**Schneider**  
Electric

**DELL**Technologies

# The world's most popular network and server UPS now with Lithium-ion batteries

Smart-UPS Lithium-ion integrated into 6U low profile wall mount Micro Data Center with APC NetBotz Security & Environmental Monitoring.

## Short depth UPS

The Smart-UPS Lithium-ion short depth UPS fit shallow depth and regular racks, giving you extra space for cable management.

## Lithium-ion batteries last 3x longer than VRLA

Smart-UPS Lithium-ion batteries last 3x longer than VRLA batteries. You don't have to replace the battery for 8-10 years.\*

## Built-in remote management

Built-in secure cloud monitoring with the APC SmartConnect Ethernet Port.

## Perfect for various applications

Small edge environment, retail back office and store network. Healthcare, K-12, Higher Ed, larger retail locations, banks and grocery stores. Supports back office, network infrastructure and IDF/MDF closets



\*Under similar operating conditions

# Save up to 50% on TCO with Smart-UPS Lithium-ion

Smart-UPS with Lithium-ion technology enables IT professionals to lower Total Cost of Ownership (TCO) by minimizing UPS maintenance and offering remote UPS management across distributed environments.

Award-winning Smart-UPS™ is the most popular UPS in the world for servers, storage and network power protection. Now available with Lithium-ion batteries which provide 3X the battery life (8-10 years) compared to valve-regulated lead-acid (VRLA) batteries (3-5 years). Smart-UPS Lithium-ion features a short depth 1500VA model to help save space for cable management or for rack mounting.

All Smart-UPS are Ecostruxure™ Ready with the SmartConnect Ethernet Port, the only built-in cloud monitoring option on the market. Smart-UPS provides availability and manageability via your network allowing you to focus on business growth instead of business downtime.



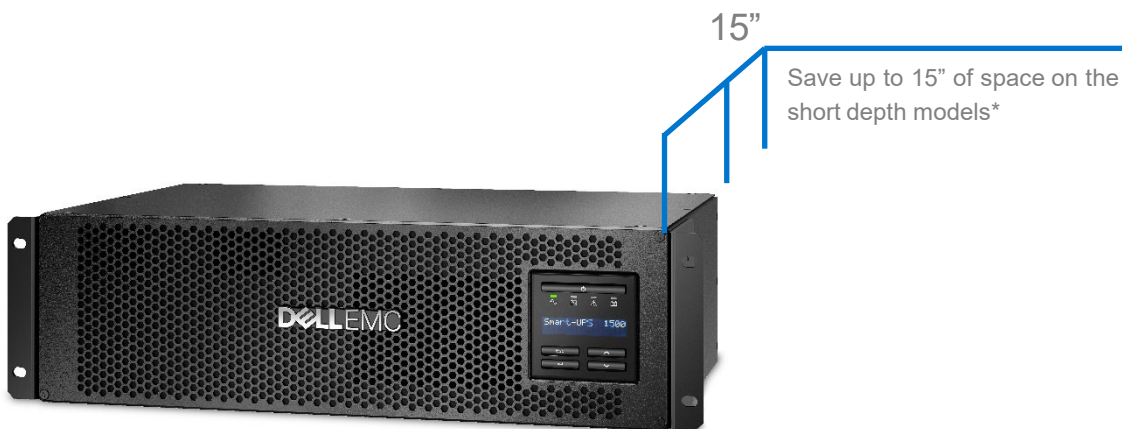
Life Is On

Schneider  
Electric

DELL Technologies

# Smart-UPS Lithium-ion Features

Intelligent and efficient network power protection. Ideal for servers, routers, switches, hubs and other network devices.



## Short-depth UPS

Suitable for short depth and standard racks. Short Depth UPS provides extra space for cable management.

## Built-in remote management

EcoStruxure™ Ready. Built-in secure cloud monitoring with the SmartConnect Ethernet Port. Pre-installed Network Management options for remote management and control.

## Lithium-ion batteries

Up to 65% lighter and 3X longer life than VRLA batteries.

## Five-year warranty

Peace of mind with a five-year warranty on both electronics and internal batteries.

## Network-grade power

Provides stable and conditioned power by filtering noise, automatic voltage regulation (AVR) and surge protection.

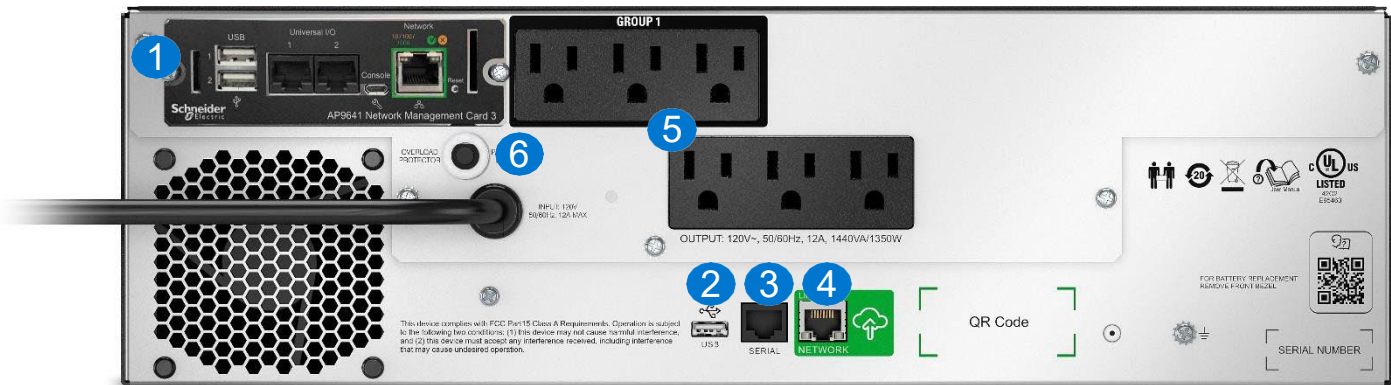
## Intelligent battery management system

Monitoring at the cell level to manage voltage helps Lithium-ion batteries provide a higher level of performance.

## Built-in energy meter

Measures energy use and displays UPS efficiency in operating modes for easy tracking

# Smart-UPS Lithium-ion continued



\*\*DLTL1500RM3UC

1. SmartSlot for network accessory card
2. USB port
3. Serial port
4. SmartConnect Ethernet Port
5. Main outlet group
6. Circuit breaker

## Switched outlet group

Control a group of output load receptacles independent from the main UPS:

- Cycling the entire UPS
- Sequenced turn ON/OFF
- Shedding of noncritical loads based on parameters (battery time, runtime remaining and overload)
- Scheduled time OFF to conserve energy
- Rebooting hung device without cycling the entire UPS

## Communication ports

Options of Serial, USB, SmartConnect Ethernet Port and SmartSlot™ for network accessory cards.

## Communication protocols

Choose from Modbus Serial, USB PowerSummary, HTTP, SNMP and Telnet.

## Flash upgradeable firmware

Allows for field updates of firmware via communication ports or Network Management Card (NMC).

## Input circuit breaker

Re-settable protection.

## High-efficiency green mode

Achieves up to 96% efficiency which minimizes utility and cooling costs without compromising UPS performance or reliability.

# Smart-UPS Management Solutions

## EcoStruxure Ready

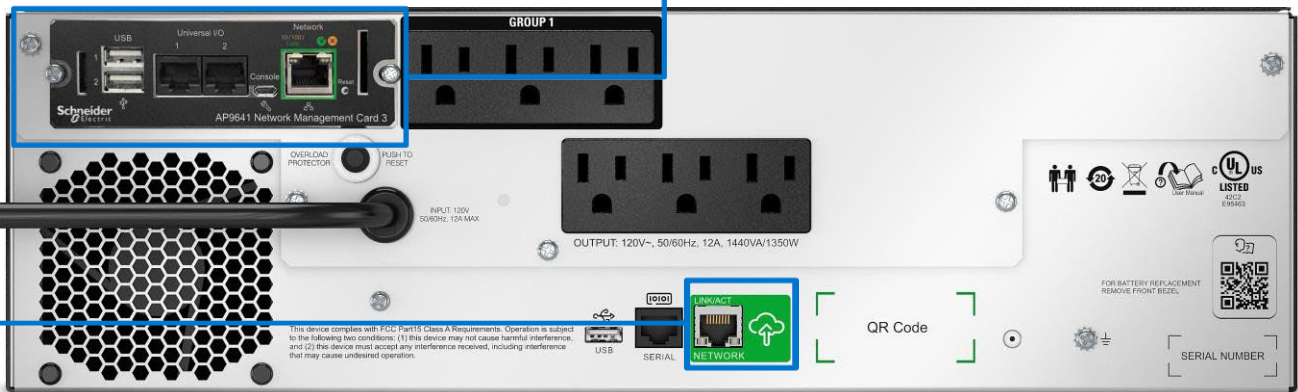
### Built-in Cloud monitoring

Connect to either the Smart-UPS Web Portal or to EcoStruxure IT via the SmartConnect Ethernet Port

## UPS Network Management Cards

### Connect directly to your network

A UPS Network Management Card allows for secure remote monitoring and control of an individual UPS



## PowerChute Business Edition

### Built-in manageability for your UPS

Graceful system shutdown of connected equipment during an extended power outage or computer problem.



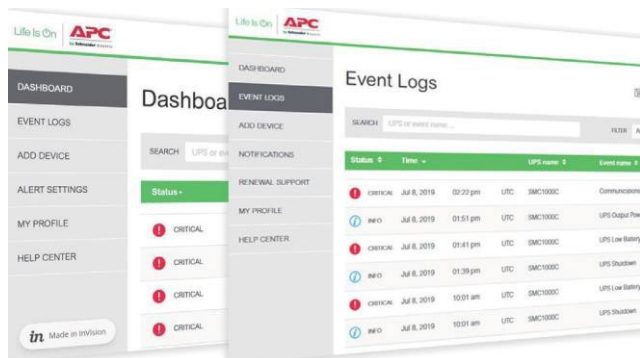
## PowerChute Network Shutdown

### Provides graceful network-based shutdown of physical and virtual IT architectures

Network-based, graceful, unattended shutdown and restart of your physical servers and virtual machines during prolonged power disturbances.

# EcoStruxure Ready Smart-UPS

Secure monitoring and UPS fleet management.

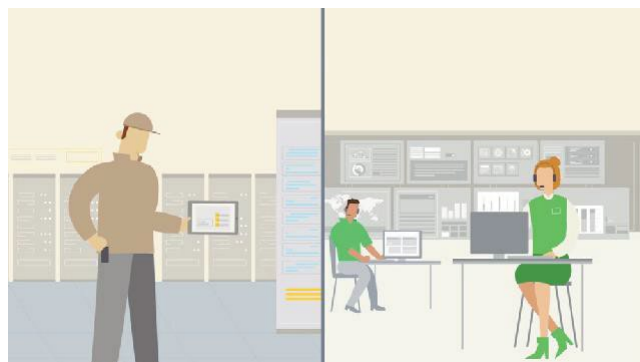


EcoStruxure Ready Smart-UPS

## Smart-UPS Web Portal for remote monitoring

Provides visibility directly to the customer to help make proactive decisions and maximize uptime via the SmartConnect Ethernet Port.

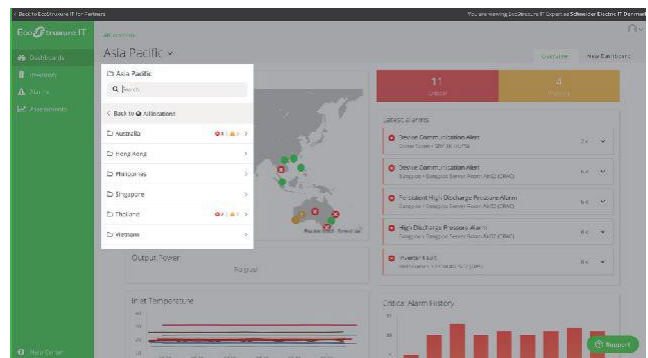
Ideal for small and medium businesses who prefer to self-manage.



EcoStruxure IT Asset Advisor

## We advise, you maintain

We provide monitoring services, and you handle the maintenance. This option appeals most to partners who want to use their own on-site service.



EcoStruxure IT Expert

## The do-it-yourself advanced monitoring

We empower you to monitor and service customers on your own or provide EcoStruxure IT Expert to your customers who prefer a self-managed option.

Ideal for distributed IT sites and businesses with mixed IT environments.



EcoStruxure IT Monitoring and Dispatch

## We monitor and service

We provide monitoring and maintenance services on your behalf. Ideal for IT solution providers who want to add service without additional cost to your business model.

# Smart-UPS Accessories



AP9641



AP9834

## UPS management accessories

- AP9640: UPS Network Management Card
- AP9641: UPS Network Management Card with environmental monitoring
- AP9643: UPS Network Management Card with environmental monitoring and Modbus
- AP9834: APC USB Wi-Fi Device for wireless communication [compatible with AP9641 & AP9643 pre-installed or embedded]



AP9625

## Rail Kit options

- AP9625: APC Smart-UPS two-post rail kit

## Service bypass panels

- SBP1500RM: APC service bypass PDU, 120V; 15 amp with (8) NEMA 5-15R



AP9562

## Power distribution units

- AP9562: APC Rack PDU, Basic, 1U, 15A, 120V, (10) NEMA 5-15R
- AP9567: APC Rack PDU, Basic, Zero U, 15A, 120V, (14) NEMA 5-15R

## Feet for UPS tower conversion

- SMTL2USF: APC SmartUPS SMTL 1000/750VA Tower Mounting Stabilizing Kit
- SMTL3USF: APC SmartUPS SMTL 1500VA Tower Mounting Stabilizing Kit
- SMTL 2200/3000 VA Tower Mounting Stabilizing Kit launching soon



# Product family



## SKU technical specifications

DLTL1500RM3UC	
Topology	Line Interactive
Output	
Output power capacity	1350 Watts / 1500 VA
Nominal output voltage	120V
Output voltage distortion	Less than 5% at full load
Output frequency (sync to mains)	50/60 Hz +/- 3 Hz (auto sensing)
Waveform type	Sine Wave
Output connections	(6) NEMA 5-15R
Switched outlet group	Yes/One
Efficiency at full load	>96%
Input	
Nominal input voltage	120V
Input frequency	50/60 Hz +/- 3 Hz (auto sensing)
Input connections	NEMA 5-15P
Input voltage range for main operations	82 – 144Vac
Batteries and runtime	
Battery type	Lithium-ion
Runtime (Full load/ Half load)	5 / 12.6 min
Communications and management	
Interface port(s)	Serial (RJ45), SmartSlot, USB, APC SmartConnect (RJ45)
SmartSlot™ interface availability	Yes. (AP9641 is pre-installed in -NC models)
Control panel	Multi-function LCD status and control console
Physical	
Net HxWxD	5.14" x 17.25" x 12"
Rack height	3U
Net weight	43 lbs
Shipping weight	50 lbs
Shipping HxWxD	11" x 17.64" x 23"
Color	Black [Silver front bezel]
Environmental	
Operating environment	32 – 104 °F (0 – 40 °C)
Operating relative humidity	0 – 95%
Operating elevation	0-10000 feet (0-3000 meters)
Storage temperature	5 – 113 °F (-15 – 45 °C) short term storage
Storage relative humidity	0 – 95%, non-condensing
Storage elevation	0-25000 feet (0-7620 meters)
Audible noise at 1 meter from surface of unit	< 45.0dBA
Conformance	
Regulatory approvals	UL 1778, UL 1973, CSA
Standard warranty	5-Year UPS and batteries

Life Is On



Learn more today!

[apc.com/lithium-ion](http://apc.com/lithium-ion)

